



# Attendance and Punctuality Policy



## Moreland Primary School

# MORELAND PRIMARY SCHOOL

Responsibility: Headteacher

Governor: Jo Honnigman

<b>Last reviewed on:</b>	
<b>Next review due by:</b>	

## Introduction

The Governors and staff at Moreland Primary School are united in their belief that regular school attendance is the key to enabling children to maximise the educational opportunities available to them. Helping them to become emotionally resilient, confident and competent adults who are able to realise their full potential and make a positive contribution to their community.

Moreland Primary School values all children. As set out in this policy we will work with families to identify the barriers to achieving and maintaining excellent attendance and offer the right service at the right time to try to resolve any difficulties.

Moreland Primary School will monitor attendance and use attendance data to identify any patterns of concern, whilst also celebrating success! Attendance concerns will be raised with parents if reasons are not known by the school, e.g. a long period of illness, this information may be shared with the Local Authority following concerns. Where we have concerns, or lack of engagement from families to improve attendance, we will follow the schools escalated approach to improving attendance. The schools escalated approach is child-centred and prioritises support and developing strong working relationships with families. We will use the Early Help process to provide support prior to escalation and consider how we can work with families to enable your child to access their right to education.

Our aim is to always to work in partnership with parents and any referral for consideration of a penalty notice is deemed to be a last resort at Moreland Primary School. Attendance figures for each child will be reported to parents as part of the annual report, we will also share a child's attendance profile if we have concerns regarding a child's attendance. Throughout the school year the Attendance Team will report on the overall attendance figures for children groups, this will be closely monitored for support and reported to the Governing Body.

### To support good attendance, and safeguarding, at Moreland we:

- Ensure the school is welcoming and every child feels a sense of belonging and connectedness.
- Ensure the school site is open at the stated times.
- Ensure the regular, efficient, and accurate recording of attendance is complete by every class teacher each day. This further supports our approach to safeguarding within the school.
- Take safeguarding seriously and we will always contact you on the first day that your child is absent from school. If your child arrives late after the close of registration, we will record their arrival at reception and transition the child to class.
- Consider any requests for leave in term time individually. This will be aligned to the Local Authority code of conduct.
- Notify the Local Authority within 5 days if a new child is joining the school roll.
- Inform the Local Authority of children whose parents have notified the school in writing and have opted for Elective Home Education.
- Work closely with the School Attendance Support Team.

- Notify the Local Authority of Children Missing in Education – aligned to the DfE 2022 Attendance paper.

### **A whole school approach to supporting attendance at Moreland**

Securing good attendance at Moreland cannot be achieved in isolation, and effective practices for improvement will involve working closely with other Leaders within the school.

### **The Strategic Approach**

Moreland Primary School adopts the 5 Foundations of Effective Attendance Practice framework, this is modelled on the work of Professor Katherine Weare. The emphasis is on developing a school culture and climate which builds a sense of connectedness and belonging to ensure all children can attend school and thrive. The approach ensures we prioritise building solid working relationships with children, and parents, prior to escalation. The staged approach we follow ensures we identify triggers early that can lead to poor attendance issues such as mental health issues, lack of trust, communication and relationship breakdowns and the possible lack of networking opportunities both internal (in-school) and external (external agencies).

### **Aims of the 5 Foundations strategy**

- Increase school Attendance and reduce Persistent Absence to meet set targets.
- Ensure Attendance is well managed within the school, with the appropriate level of resources allocated.
- Enable the school to make informed use of attendance data to target interventions appropriately, focusing on the key demographic groups highlighted in the 2022 DFE paper.

### **Objectives**

- create an ethos within the school in which good attendance is recognised as the norm and every child aims for excellent attendance.
- make attendance and punctuality a priority.
- set focused targets to improve individual attendance and whole school attendance levels.
- embed the 5 Foundations of Effective Attendance Practice framework which defines agreed roles and responsibilities and promotes consistency in carrying out designated tasks with respect to promoting attendance and punctuality.
- record and monitor attendance and absenteeism and apply appropriate strategies to minimise absenteeism.
- develop a systematic approach to gathering and analysing relevant attendance data.

- provide support, advice and guidance to; parents, children and develop mutual cooperation between home and the school in encouraging good attendance and in addressing identified attendance issues.
- Demonstrate, using rewards, that the school recognises good attendance and punctuality are achievements in themselves.



**5 Foundations Of Effective  
Attendance Practice**

### **5 Foundations of Effective Attendance Practice**

The main aim of the framework is to ensure the school promotes a culture of good attendance and celebrates success. Ultimately, the framework will ensure there is a culture of feeling safe and school being a place where children want to be.

Positive health and emotional well-being are key factors in improving social development, school attendance and educational achievement. The 5 Foundations of Effective Attendance Practice model promotes, and supports, a whole school approach to mental health and emotional well-being; ensuring SEMH support remains a key driver in improving attendance for all children.

Each Foundation is supported by 5 Key Performance Indicators, these are used to ensure the school can embed the Foundations framework and understand the strategic direction regarding attendance improvement. Each year the school will use the 5 Foundations self-assessment tool to understand what works well and identify what we need to do even better. We then follow the 5 Foundations school improvement process to implement the attendance plan and ultimately improve the lives of children and families we work with.



**Foundation 1  
Whole School Thinking  
Culture & Climate**

*The school has a fully embedded ethos in which excellent school attendance is expected, developed and nurtured. An escalated approach ensures the school has a deeply embedded and consistent whole school approach to improving attendance.*



**Foundation 2  
Supportive Policies,  
Systems and Processes**

*The approach to improving attendance is built on solid policies, systems and processes; this ensures sustainable and continuous improvement drives practice. Succession planning is built around an effective systems leadership model - rather than that of an individual Attendance Leader. The Attendance Policy drives school practice, it is deeply embedded in daily practise and ensures the school sets, and maintains, high expectations to improve the culture of attendance.*



**Foundation 3  
Professional Learning  
Staff Development**

*The school prioritises developing a fully engaged team of attendance experts, with a shared vision and core purpose. Through this development the Attendance Leader will raise the status of attendance and ensure improved attendance is both sustained and continuous. CPD will support staff at all levels to fully understand their role in supporting attendance. The development of external partnerships will support attendance improvements through a multi-disciplinary approach for identified children and families.*



**Foundation 4  
Implement Targeted  
Programmes And Intervention**

*Data information and analysis direct resources proactively towards key demographic groups and identified individuals. The expert use of data analysis informs decision making at all levels. A rigorous and effective attendance cycle ensures the Attendance Leader not only captures key information but also further understands the 'deeper roots' that creates barriers regarding attendance to school.*



**Foundation 5  
Connect Appropriately With  
Approaches To  
Behaviour Management**

*Connecting and belonging drives the school approach to supporting attendance - this is deeply embedded in an evidence-based approach. The school has effective routines in place that are followed by staff. Staff at all levels within the school understand the 'deeper roots' regarding poor attendance and this is supported through a systematic approach. The school has developed, and embedded, an effective rewards system to further drive attendance improvements and celebrate success.*

**DFE: Working Together To Improve Attendance 2022.**

September 2022 the DFE: Working Together To Improve Attendance paper had replaced all previous guidance on school attendance except for statutory guidance for parental responsibility measures.

The table below identifies how the 5 Foundations of Effective Attendance Practice will underpin the DFE 2022 paper.

DFE Summary of Expectations	 Foundation 1 Whole School Thinking Culture & Climate	 Foundation 2 Supportive Policies, Systems and Processes	 Foundation 3 Professional Learning Staff Development	 Foundation 4 Implement Targeted Programmes And Intervention	 Foundation 5 Connect Appropriately With Approaches To Behaviour Management
Develop a whole-school culture that promotes the benefits of high attendance.	✓	✓	✓	✓	✓
Have a school attendance policy		✓			
Have day-to-day processes to follow up absence	✓	✓	✓		
Monitor and analyse data to identify those that need support		✓	✓	✓	
Engage with families, understand barriers to attendance and work together to remove them	✓			✓	✓
Provide additional support for pupils with medical conditions or SEND			✓	✓	✓
Share information and work collaboratively with others	✓	✓	✓	✓	
A new focus on persistent and severe absence		✓	✓	✓	✓
Find out what the DFE expects from other stakeholders		✓	✓	✓	



## **Moreland Primary School will always work in partnership with our parents**

Moreland Primary School recognises that poor attendance is often an indication of difficulties in a child's life and their lived experience. This may be related to problems at home or in school. Parents should inform the school of any difficulties or changes in circumstances that may affect their child's attendance and or behaviour in school, for example, bereavement, divorce/separation, incidents of domestic abuse. This will help the school to identify any additional Early Help that may be required. Safeguarding is a priority, concerns for any child at any time will be reported to the Designated Safeguarding Lead. We will always follow Keeping Children Safe in Education 2024 and our Child Protection Policy.

Some children are more likely to require additional support to attain good attendance, for example, children who are vulnerable, have a medical need or EHCP plan will be monitored and supported in school. At Moreland we will proactively identify and follow up on a child's non-attendance and gather information about the child. This will result in taking early action to prevent non-attendance developing and monitoring the impact of targeted support.

The Attendance Team will initially:

- Check records, including any from other schools which the child has attended previously.
- Discuss with staff how the child is coping with the curriculum
- Speak to the Special Educational Needs Coordinator to establish whether the child is on the Special Educational needs register.
- Take into account the voice of the child and understand any difficulties, e.g. curriculum or bullying and their views on the issue could be addressed.

Children whose attendance falls below 90% are Persistently Absent from school, where a child falls under 50% attendance the child will be classified as a Severely Absent child. Ultimately this will indicate that all intervention, and support, offered by Moreland Primary School has not made the expected impact to improve overall attendance. Where attendance remains a concern and all other interventions and support have not made a significant impact, we will escalate with external partners.

## **First Day Contact**

At Moreland Primary School we expect our parents to make contact at the earliest opportunity on the first day of any absence. We will always contact you via calling you, emailing or text message. Where we have on-going concerns regarding your child's attendance, we will visit your home address and write to you. We may even invite you to meet with a member of staff to discuss any on-going concerns regarding attendance. It is important that you talk to us first; you are legally responsible under Education Act 1996 for ensuring that your child is in school every day and on time. If we cannot make contact with you we will continue to make announced and unannounced home visits, regarding any concerns we may have surrounding attendance at Moreland Primary School.

## Parents are responsible for securing full-time education

Parents are responsible for ensuring their children receive a full-time education. Each situation will be dealt with on an individual basis, fairly and equitably always remembering the welfare and safety of the child is the paramount concern.

The term 'parent' includes those who are not a natural parent but have parental responsibility for the child as defined by the Children's Act 1989 or have care of the child as defined by the Education Act 1996.

- Absence can only be authorised by the school; parents do not have this authority. All absences will be treated as unauthorised unless satisfactory evidence for the child's absence has been received. In the first instance contact from the parent will be accepted as evidence. However, if a child's attendance continues to cause concern, parents may be asked to provide medical evidence where absences occur repeatedly due to reported illness. This will usually be in the form of an appointment card, prescriptions etc. Absence may be coded as unauthorised without evidence.
- Parents should wherever possible make all medical and dental appointments outside of the school day. Where this is not possible, children should attend school for part of the day. Appointment cards should always be provided as evidence of medical/dental appointments.
- Unless parents have provided a satisfactory explanation and it has been accepted by the school absence will not be authorised.

Examples of unsatisfactory explanations include:

- A child's/family member's birthday.
- Shopping for uniform.
- Having their hair cut.
- Closure of a sibling's school for INSET or other purposes.
- "Couldn't get up".
- Illness where the child is considered well enough to attend school without medical authority and in the absence of a communicable disease.
- Leave during term time taken without authorisation of the school
- Head lice – let the school know and letters will then be sent to all parents in a confidential manner.

## Punctuality

### **SOFT START**

In order to improve attendance and punctuality, children in years 1, 2, 3, 4, 5 and 6 will be able to arrive at school at 8.50am, go straight to class and start their learning. The Gard Street gate will be closed by 9.05am so any late children will have to walk round to the main entrance. Children are NOT to be left at the gate after 9.05am – they must be escorted to the school office to be registered. There is no change for 2year olds, Nursery, Reception children.

The Gate opens for children at 08:50am, the gate will close at 09:05 am. Children arriving after 9:00am will be recorded as late. Late marks will not be authorised and will count as an absence for the school AM session. Punctuality is recorded and this will be added to your child's record of attendance, a letter will be sent to parents every half term regarding attendance concerns of a child. If a child arrives at school from 09:30am they will be U coded.

The absence will only be authorised if a satisfactory explanation for the late arrival can be provided, for example, attendance at a medical appointment.

The absence will be recorded as unauthorised if a child has arrived late without justifiable cause, for example they woke up late or were waiting for their uniform to dry.

### Transition following long term absence or illness

Absence can significantly interrupt the continuity of children's learning.

During any long-term absence, Moreland Primary School will:

- Maintain contact with the child.
- Carefully plan the transition back to school, ensuring your child feels welcome and gains a sense of belonging.
- Ensure the child once again feels safe in school and if they experience any concerns, they will have an appointed member of staff to work with.
- The Class Teacher and Teaching Assistant will support a child when returning to class and help them with any work they may have missed.

### Leave during Term Time

From 1<sup>st</sup> September 2013, the Government amended the England (Pupil Registration) (England) Regulations 2006. Head teachers may only grant leave in 'exceptional circumstances' only. Moreland Primary School observes Islington Council's 'Leave in Term Time Guidance for schools and Academies'.

Parents wishing to apply for leave during term time must send a written request for the attention of the Headteacher before making any arrangements. Retrospective requests will not be considered and therefore will result in the absence being categorised as unauthorised. Each leave during term time request will be considered on an individual basis.

If a child fails to return and contact with the parent has not been made or received, school may take the child off the school's roll in compliance with the Education (Pupil registration, England) Regulations 2006. This means that the child may lose their school place.

If the permission to take leave is not granted and the child is still absent from school, the absence will be **unauthorised**. In such cases the school may consider legal action. (See Appendices C)

Only in **exceptional circumstances** will absence be agreed. In such cases, consideration will be given to the cultural needs and the family circumstances, such as minority ethnic children returning to their country of origin. In these cases, granting leave for longer periods than normal may be considered justified. In all cases though, parents will be required to justify why the leave needs to be taken during term time.

### Using attendance data

Children's attendance will be monitored and shared with other agencies and the DfE.

Half termly attendance meetings will be held by the Attendance Team. Meetings will focus on agreed actions for those children of concern. The purpose of each meeting will be to understand the progress the school is making when supporting identified individuals or groups of children.

Attendance data will be used to identify emerging patterns and trends to inform whole school strategies to improve attendance and attainment.

It is the responsibility of school Governors to challenge and support the school regarding overall attendance, regular reports will be presented to this body. The governors will therefore examine closely the information provided for them and seek to ensure that our attendance figures are as high as can be.

### Persistent Absence

At Moreland we aim to communicate the importance of attendance with parents and children. We have a particular focus on reducing Persistent Absenteeism at the school. The Persistent Absence threshold for children is currently 10% and Ofsted will use this threshold in its inspection of schools.

The threshold means that any child will be classed as Persistently Absent when they have missed 38 or more sessions. This equates to 19, or more, missed days during the academic year - which is as little as 6 days over each of the three Terms. This also equates to the equivalent of 1 day of absence, or more, a fortnight across a full school year

We will use a 19-day tracking system to make you aware of the number of days your child has missed in education. This will allow us to work together to reduce the number of days and attempt to prevent your child from reaching this number.

Once a child has reached 38 sessions, or 19 days absence, they will be classified as Persistently Absent from school and we must report this to the Local Authority and follow external legal proceedings.

### Statutory Duty

Section 7 of the Education Act 1996 states that the parent of every child of compulsory school age receive efficient full-time education suitable to their age, aptitude and ability and any special educational needs they may have, either by regular attendance at school or otherwise.

A child is of compulsory school age at the beginning of the term following their 5<sup>th</sup> birthday.

Under the Education Act 1996, the Local Authority has a statutory responsibility to ensure that parents secure education for children of compulsory school age and where necessary, use legal enforcement. Moreland Primary School recognises Islington Council's 'Penalty Notice – Code of Conduct' and will implement prosecution where it is fair and equitable to do so.

In accordance with the regulations regarding pupils' attendance at school, Moreland Primary School keeps an attendance register on which at the beginning of each morning and afternoon session children are marked present or absent. The marks are electronically processed and stored on the school's central administrative system SIMS. This information is shared with the Department for Education.

### Legal Sanctions

There are several sanctions that school can take to address the issue of non-attendance. To try and identify the reason for absence we will always talk to you first to identify the reason for absence. Moreland will always ensure the escalated process map is followed, focusing on the support a child needs at each stage (please access on the school website). However, for lack of engagement in attendance support there are sanctions that will be followed:

#### **Penalty Notices (Anti-Social Behaviour Act 2003)**

Penalty Notices will be considered when:

- A child is absent from school for the purpose of a Leave of Absence in term time and the absence has not been authorised by the school.
- A child has accumulated at least ten sessions of unauthorised absence and further absence has occurred following written warning to improve

Penalty Notices will be used in accordance with Islington Council Code of Conduct.

#### **Prosecution**

Where intervention through the school's process fails to bring about an improvement in attendance, the local authority will be notified and legal proceedings in the Magistrates Court may be taken. The school will provide the Local Authority with evidence required for a prosecution under section 444/4441 (a) of the Education Act 1996 and will appear as a prosecution witness if required by the court. This is to ensure that parents realise their own responsibilities in ensuring their child's attendance at school.

Section 4441(a) of the Education Act 1996 states that if a parent fails to ensure the regular school attendance of their child if he/she is a registered pupil at a school and is of compulsory school age, then they are guilty of an offence.
---

Schools, trusts and local authorities are expected to work together and make use of the full range of legal interventions rather than relying solely on fixed penalty notices or prosecution. It is for individual schools

and local authorities to decide whether to use them in an individual case after considering the individual circumstances of a family. These are:

- Parenting contracts
- Education supervision orders
- Attendance prosecution
- Parenting orders
- Fixed penalty notices

***Please refer to section 6 of the DFE Working together to improve school attendance 2022 for more information.***

### **Children at risk of Missing in Education (CME)**

Children Missing Education (CME) are a vulnerable group of children. All agencies who work with children have a duty to support the Local Authority in ensuring all children are safe and looked after appropriately.

**CME** includes those children who are **missing** (family whereabouts unknown), and are children who are registered on a school roll / alternative provision. This might be a child who is not at their last known address **and either**

- has not taken up an allocated school place as expected, or
- has 5 or more days of continuous absence from school without explanation, or
- left school suddenly and the destination is unknown

**It is our responsibility as a school to work with the LA Education and Inclusion team, by making referrals.**

**EVERY LESSON COUNTS AND CHILDREN ARE LOSING OUT FOR EVERY LESSON MISSED. EVEN CASUAL ABSENCE CAN AFFECT YOUR CHILD'S ATTAINMENT.**

Across one school year:

- Less than 5 days absence = 97.3% attendance
- 14 days absence (approx.) = 92.6% attendance
- 20 days absence (approx.) = 89.4% attendance
- 30 days absence (approx.) = 84.2% attendance

If a child achieves 80% attendance this means that they have missed approximately 39 days of education over the academic year, averaging 1 day per week.

## Celebrating Success

At Moreland we feel it is important to reward children who have achieved good or improved attendance. Each term all children who have achieved such progress will receive a certificate, badge and a pencil. We notify parents of our whole school attendance percentage in our newsletter. The weekly Attendance and Punctuality race tracks allows classes to celebrate their collective attendance successes. When a class wins either the Attendance or Punctuality race track, they can enjoy a movie afternoon!

Moreland Primary School will always challenge falling attendance and reward improvements. We are committed to the future of all children that attend Moreland Primary School, and by working in partnership with the school community we believe that together we can achieve more!

We can only achieve this by working in partnership with you, if you have any concerns or anything that prevents your child from attending Moreland Primary School or if you would like to become involved in our school please contact the school.

## Roles and Responsibilities

### Moreland Primary school expectations – Parents:

- Parents are legally responsible for ensuring their children attend the school regularly and may risk prosecution if they fail in this responsibility.
- Parents should ensure that their children arrive at school on time, with the correct equipment and in full school uniform.
- Parents should support the school by avoiding, if possible, non-emergency medical/dental appointments for their child during term time.
- Parents should be aware that they do not have the automatic right to take their child out of the school for a holiday during term time.
- It is the parents' responsibility to inform the school of the reason for a child's absence on the first day of absence and in line with the school's procedures for informing of absence.
- All unexplained attendances will be monitored and parents will be kept informed about any attendance concerns relating to their own child. Parents are expected to attend meetings when requested and support the school in responding to ongoing attendance concerns.

### Moreland Primary School expectations – Children:

- All children should aim to have an excellent attendance and punctuality record for which there will be appropriate rewards.
- All children are expected to be on the school site on time and ready to learn. Children are expected to be punctual to all lessons and registration.
- Children who arrive at school late must follow the correct procedures for recording their lateness and entering their lesson.
- Children who need to leave school for a medical appointment must follow the correct procedures for recording that they have permission to leave and have left the building and must be collected by a parent/carer.
- Children must not leave the school without permission, 'truant'; this will be seen by the school as a Safeguarding concern as well as a Health and Safety concern.



### **Moreland Primary School expectations - Class Teacher**

The Class Teacher are the key staff members in promoting regular punctual attendance. The Class Teacher will:

- provide a good example by always being punctual to registration and meeting children at the door – providing a welcoming environment;
- keep an accurate and up-to-date register of attendance;
- follow the Attendance Policy procedures when dealing with absences and punctuality;
- maintain swift action and effective communication with phase leaders, Assistant Head Teachers and/or School Attendance Leaders on all attendance matters concerning the class;
- ensure that children are aware of the importance of the school attendance target and their own individual attendance targets;
- ensure children receive rewards in relation to attendance and punctuality success – aligned to the Attendance Policy;
- build a welcoming atmosphere in the classroom and provide support as necessary when children return after an absence.

### **Moreland Primary School expectations - Pastoral team.**

The Pastoral team take responsibility for monitoring the attendance of children and regularly promote the importance of attendance and punctuality. They will:

- ensure that their team is aware of their responsibilities with respect to promoting attendance and punctuality and adherence to the attendance policy and procedures;
- ensure that rewards and sanctions for attendance and punctuality follow agreed procedures and align to the School Behaviour and Attendance Policy;
- monitor and track the attendance of vulnerable groups;
- monitor the attendance of individual class groups, following up with irregular patterns of absenteeism that are not being effectively addressed;
- liaise effectively with the Attendance Leader and work together on ensuring that appropriate action is taken in the management of absenteeism and poor punctuality;
- have attendance as a regular item during pastoral meetings;
- ensure contact is made with parents of poor attendees – always placing support before sanction.

### **Moreland Primary School expectations - Attendance Team**

The Attendance Team are responsible for regularly checking attendance data and ensuring data is accurate and up to date. The Attendance Team will:

- ensure that data is input daily into the attendance management system;
- ensure that parents of absent children are contacted where notification of absence has not been received;
- respond to any parent seeking support on attendance concerns;
- provide regular attendance and punctuality data for relevant staff and external agencies in line with the agreed procedures and timescales;
- be responsible for disseminating important attendance information including informing the Attendance Leader of which children are of concern; in-line with the agreed procedures and timescales;
- be responsible for keeping a record of the interventions in place to encourage attendance and for generating all documentation including letters to parents;
- be responsible for liaising closely with the Local Authority's Attendance Team to ensure appropriate levels of intervention take place; referrals are made, and attendance meetings are set up;
- be responsible for managing and maintaining attendance records and systems.

### **Moreland Primary School expectations – Senior Leaders**

- The Senior Leaders responsible for Attendance will promote good attendance and punctuality. They will:
- regularly meet with SLT reporting on progress and next steps planning;
- attend attendance meetings;
- implement the 5 Foundations of Effective Attendance Practice framework;
- ensure the Foundations action plan is monitored and actioned throughout the school year;
- provide training and support to staff;
- participate in pre-legal meetings;
- use attendance data to make links with attendance and academic performance;
- lead attendance reward assemblies;
- ensure that reference to attendance is included in all school documentation e.g. newsletters, letters to parents, school prospectus,

### **Moreland Primary School Expectations – Governing board**

Governors are responsible for:

- The governing board is responsible for monitoring attendance figures for the whole school on at least a termly basis. It also holds the Headteacher Catherine Lawrence to account for the implementation of this policy.

## APPENDIX A

### Staged Approach to the Management of Attendance

Whole school attendance is monitored at a minimum of every half term but more frequently as appropriate.

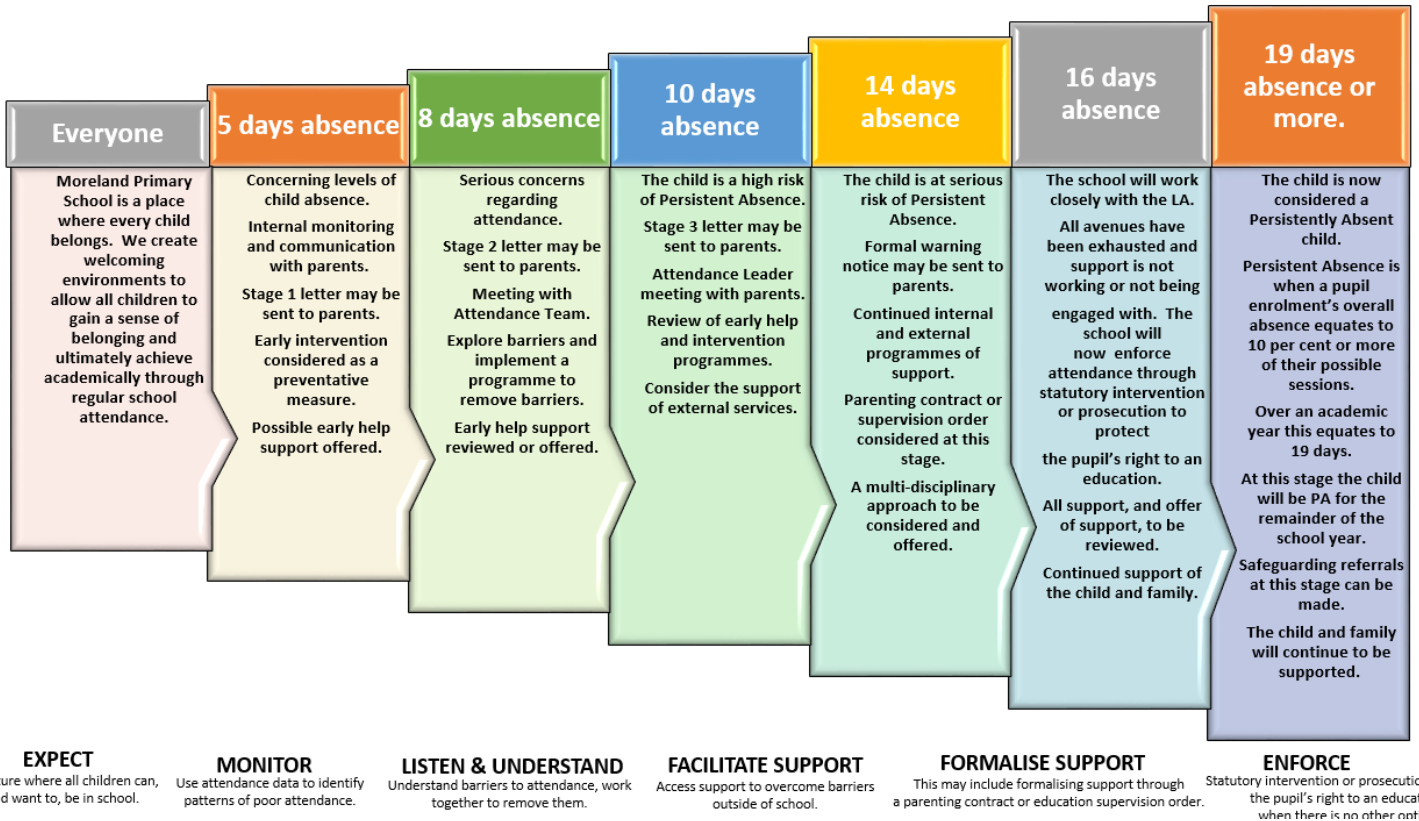
Attendance is more closely evaluated of pupils whose attendance is below the whole school target of 96%.

Stage	Trigger	Outcome
1	Attendance falls below the whole school target and the child's attendance is of concern.	Letter 1 will be sent to parents: <ul style="list-style-type: none"> <li>· Expressing concern about attendance</li> <li>· Informing the parents of current attendance</li> <li>· Reminding parents of their legal responsibilities and the nature of 'persistent absence'</li> <li>· Welcoming the parents to arrange contact the school if they wish to discuss attendance further.</li> </ul> <p>Attendance is monitored for a fixed period.</p>
2	Parents have received a Stage 1 letter and attendance remains of concern.	Letter 2 will be sent to parents: <ul style="list-style-type: none"> <li>· Informing parents of ongoing concern about attendance</li> <li>· Informing the parents of current attendance</li> <li>· Enclosing a registration certificate</li> <li>· Reminding parents of their legal responsibilities and the nature of 'persistent absence'</li> <li>· Notifying parents that the child's attendance is being monitored</li> <li>· Welcoming the parents to arrange contact the school if they wish to discuss attendance further.</li> </ul> <p>Attendance is monitored for a fixed period.</p>
3	Parents have received a Stage 2 letter and attendance remains of concern.	Letter 3 will be sent to parents: <ul style="list-style-type: none"> <li>· Informing parents of ongoing concern about attendance</li> <li>· Informing the parents of current attendance</li> <li>· Enclosing a registration certificate</li> <li>· Reminding parents of their legal responsibilities and the definition of 'persistent absence'</li> <li>· Requesting that the parents provide medical evidence of absence for illness, to enable the school to consider the authorisation of absence.</li> <li>· Inviting parents to an appointment with the Attendance Lead on a specific date, with the purpose of discussing attendance, agreeing an action plan of support, considering whether it may be appropriate to involve outside agencies, and setting an internal school attendance target.</li> </ul>
4	Parents have failed an internal school attendance target and attendance is below the level of Persistent Absence (90%)	Letter 4 will be sent to parents: <ul style="list-style-type: none"> <li>· Informing parents of ongoing concern about attendance</li> <li>· Informing the parents of attendance during the target period.</li> <li>· Enclosing a registration certificate</li> <li>· Notifying parents that the school intends to discuss their child's attendance with Pupil Services, and may make a formal referral.</li> </ul>
	During a monitoring period, attendance improves.	A Letter of Praise will be sent to parents: <ul style="list-style-type: none"> <li>· Informing the parents of attendance during the monitoring period.</li> <li>· Notifying parents that the school will continue to monitor attendance to ensure sustained improvement.</li> </ul>

# APPENDIX B

## Gradual Approach

F1



**APPENDIX C**

**Application for Leave of Absence in Term Time**

**PUPIL REQUEST FOR ABSENCE FORM**

Section 23 of the Antisocial Behaviour Act 2003 gives powers to the local authority, and other designated bodies, to issue **penalty notices** where a parent/carer is failing to ensure their child's regular attendance at school. The issue of a Penalty Notice may be considered in cases where a pupil is absent from school and the absence is unauthorised.

**Pupil's full name:** .....

**DATES OF ABSENCE:**

**First day of absence:** .....

**Last day of absence:** .....

**Total number of days absent:** .....

**REASON FOR LEAVE OF ABSENCE AND DESTINATION:**

.....  
.....  
.....  
.....

When considering authorisation of leave, the Head of School will consider:

1. Your child's current attendance percentage.
2. The time of year (public/internal examinations).

**OFFICE USE ONLY**

**AUTHORISED BY HEAD OF SCHOOL: YES/ NO**

**SIGNATURE:**.....

### **Relevant legislation**

The Education Act 1996

The Children Act 1989

The Crime and Disorder Act 1998

The Anti-social Behaviour Act 2003

The Education and Inspections Act 2006

The Sentencing Act 2020 The Education (Pupil Registration) (England) Regulations 2006

The Education (Parenting Contracts and Parenting Orders) (England) Regulations 2007

The Education (Penalty Notices) (England) Regulations 2007

### **Relevant government guidance**

Parental responsibility measures for attendance and behaviour

Children missing education

Keeping children safe in education 2022

Working together to safeguard children

Elective home education

Alternative provision: statutory guidance for local authorities

Exclusion from maintained schools, academies and pupil referral units in England

Supporting pupils at school with medical conditions

Ensuring a good education for children who cannot attend school because of health needs

Promoting and supporting mental health and wellbeing in schools and colleges

Approaches to preventing and tackling bullying