

NEWSLETTER

WHAT'S
NEW?

Headteacher's
News



INTERNATIONAL DAY



Welcome to this month's newsletter. It has been a busy first half term across the school.

It was lovely, last week, to see all the families celebrating International Evening together and sharing food. Thank you to all the families who brought food in for us to share. It was delicious! It was also great to see so many parents visit the class museums. I hope it gave you an insight into what children have been learning and the effort they put into their work. Thanks also to the PTA and to Dani and Sophie for organising.



The PTA is working really hard to help raise funds for the school. Following a donation of playground equipment last term they have this term kindly provided us with funds to buy 10 Chrome books, This was funded by the generous donation the PTA received from Phillip and Phoebe's family when they left in the summer to return to the USA.

We have also received a donation of 30 Chrome books from Stellanor Data Centre (the new company opposite us on Moreland Street). We very much appreciate this generous donation and look forward to working closely with our neighbours in the near future.



Out and About:

Did you know that being outdoors can trigger measurable changes inside your body from lowering stress hormones, easing blood pressure and even improving your gut health.

You don't have to hike for hours to feel these benefits as maximum impact happens after just 20 minutes, so even a walk in the park a few times a week can benefit your body and mind.

We might live in the London borough with the least green space but there are still plenty of places to get your nature hit close by, Why not visit a new park - Clissold Park, Finsbury Park, Regent's Park or Waterlow Park? Or a trip to the woods - Highgate Woods and Queen's Wood are an easy journey on the 43 bus. Maybe a trip to a local nature reserve such as Camley Street, Gillespie Park or Culpeper Community Garden at Angel. You could even take a walk down the canal.

Half term is a perfect time to explore some of these natural habitats and green spaces and to share the wonders of Autumn with your children.

NURSERY
ENJOYING THEIR
APPLES OF
AUTUMN
SESSION IN THE
PARK

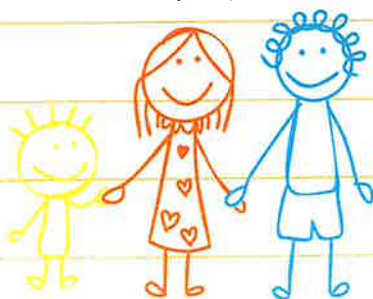


The National Park City map and website has loads more locations and ideas.
<https://nationalparkcity.london/paper>

Understanding Social and Relationship Development in Children

Children's ability to make friends, cooperate, and manage disagreements develops gradually as they grow. Just like learning to walk or read, social and emotional skills develop through experience — including both happy moments of friendship and the inevitable fallouts that teach empathy, patience, and problem-solving.

To help parents and carers navigate this we have created a guide which outlines what's typical at different ages, what parents can expect, and how to support healthy social development. This is attached to this newsletter. Please speak with your child's teacher or Dom or Tracy if you would like to know more.



Self Esteem UNICEF/ Dove Day

You may have seen in the Islington Gazette that we had a visit from Pop Star Arlo Parks who is a UNICEF ambassador for children's well being. Children in KS2 took part in workshops on positive self image delivered by Dove Ambassadors and Oak class got to have a Q and A with Arlo. We were proud to be selected for this as part of our Rights Respecting Schools Work.



Safety Bulletin

As Fireworks Night approaches, let's all enjoy the celebrations safely! Please remember these simple tips to keep everyone safe and happy:

- Go to an organised display.
- Always have an adult light fireworks and sparklers.
- Keep a bucket of water or sand nearby in case of emergencies.
- Never return to a lit firework, even if it looks like it hasn't gone off.
- Hold sparklers at arm's length and wear gloves.
- Keep pets indoors – fireworks can be very frightening for them.
- Watch displays from a safe distance.

Let's keep Fireworks Night bright, fun, and safe for all!



Coming Up:

EVENTS

Nativity Play - Tuesday 9th December 2.30pm

Christmas Fair



Christmas Fair - Friday 12th December after school

Christmas Donkey Parade to St Clements Church - Tuesday 16th December 10.30 am (EYFS, Y1 and some Y3 children)



Christmas Jumper Day and Christmas Lunch - Wednesday December 17th

Festive Sing-a-long - watch this space the



■ Guide for Parents: Understanding Social and Relationship Development in Childhood

Children's ability to make friends, cooperate, and manage disagreements develops gradually as they grow. Just like learning to walk or read, social and emotional skills develop through experience — including both happy moments of friendship and the inevitable fallouts that teach empathy, patience, and problem-solving.

■ Early Childhood (Ages 0–3): First Steps in Social Awareness

What's Typical

- Babies begin by forming strong attachments with caregivers — the foundation for all later relationships.
- Around 18 months to 3 years, children start noticing and showing interest in other children.
- Play is often parallel — they play beside, not with, other children.
- They are learning about ownership ('mine!') and can find sharing difficult.
- Tantrums and short-lived conflicts are normal at this stage as they explore independence.

How They Learn to Get Along

- Through adult modeling: children imitate kindness, patience, and turn-taking they see in adults.
- Simple cooperative play begins, such as copying another child's actions.

How Parents Can Help

- Narrate feelings: 'I can see you're sad because she took your toy.'
- Encourage sharing, but don't force it — take turns instead.
- Model gentle problem-solving: 'Let's find another toy while we wait our turn.'

■ Preschool (Ages 3–5): Learning to Play Together

What's Typical

- Children begin to form real friendships and enjoy imaginative, cooperative play.
- Conflicts are frequent — over toys, turns, or rules of play — but these are key learning moments.
- They are learning empathy but still see the world mainly from their own perspective.
- 'Best friends' and 'I don't want to play with you' phases are normal and short-lived.

How Parents Can Help

- Teach simple conflict-resolution language: 'Can I have a turn after you?' or 'I don't like that.'
- Praise kindness and cooperation.
- Help children understand others' feelings ('How do you think Sam feels when that happens?').

■ Early Primary (Ages 5–8): Building Friendships and Fairness

What's Typical

- Children start to prefer certain friends and understand the idea of fairness and rules.
- They can empathize more and begin to care about others' feelings.
- Arguments and exclusions may still occur but often resolve faster.
- Friendships can be intense but may change frequently.

How Parents Can Help

- Encourage reflection after conflicts: 'What could you do differently next time?'
- Normalize ups and downs in friendships ('Friends sometimes argue, and that's okay — it's how we learn.').

- Offer guidance but let children try to solve small conflicts themselves.

■■ Later Primary (Ages 8–11): Understanding Others and Group Dynamics

What's Typical

- Friendships become more stable and based on shared interests and trust.
- Children care more about being accepted by peer groups.
- Conflicts can involve misunderstandings, jealousy, or gossip.
- Children begin to see both sides of an argument and value fairness more deeply.

How Parents Can Help

- Talk openly about friendship challenges — listen without judgment.
- Encourage empathy: 'How might your friend have felt when that happened?'
- Teach perspective-taking and forgiveness.
- Support independence in solving problems, stepping in only when necessary.

■■■■■ Early Adolescence (Ages 11–14): Complex Friendships and Identity

What's Typical

- Friendships become central to self-esteem and identity.
- Peer approval becomes very important, and group belonging may cause friction.
- Conflicts can feel intense — misunderstandings, exclusion, or 'falling out' are normal but distressing.
- Empathy and moral reasoning deepen.

How Parents Can Help

- Stay available and calm — avoid judgment or overreacting to fallouts.
- Help teens reflect on what healthy friendships look like.
- Encourage activities outside one friend group to build resilience.
- Model respectful disagreement in your own relationships.

■ Key Message for Parents

It's normal for children to argue with friends, be possessive, or get upset in social situations. Every disagreement is a chance to practice listening, understanding, negotiating, and making amends.

■ How Parents Can Support Social Growth at Any Age

- Model kindness and respect. Children copy what they see.
- Name and validate feelings: 'It's okay to be upset when your friend says no.'
- Encourage problem-solving: 'What could you try next time?'
- Celebrate friendship efforts, not just successes ('You tried really hard to share today.').
- Keep perspective: Most fallouts are temporary and part of healthy development.
- Recognise and normalise small issues. A small argument or feeling left out for a day is usually part of normal social learning — not necessarily a sign of bullying or a serious problem.
- Focus on the positives. Ask, 'What went well at school today?' or 'Who made you smile?' to help children notice good experiences as well as challenges.



Contact us: Tel - 0207 253 8144

Email - admin@moreland.islington.sch.uk Website - www.moreland-islington.co.uk



Moreland Primary School

Reaching higher than I dreamed, becoming the person that I want to be,
doing the best I can for the world and for me.

23rd October 2025

Attendance & Punctuality

Dear parents/carers,

Please make sure your child attends school every day and on time. See below the attendance figures we ask parents to aim for, if you have any problems regarding attendance or punctuality please talk to Dom. Remember the school does not authorise any leave in term time, all holidays should be taken in the school holidays only.

If your child is sick you can either ring the school and let us know or leave a message on parent mail. If we do not have a reason for an absence Dom or Danielle will call you.

Holiday dates are on our website

The attendance figures below are Government guidelines that we have to follow



OCTOBER 2025

CLASS	ATTENDANCE	LATES
Rec - Pear	93%	11
Rec - Beech	89%	24
Year 1-Maple	89%	4
Year 1-Olive	92%	9
Year 2-Cherry	93%	16
Year 2- Pine	98%	12
Year 3 - Ash	97%	22
Year 3 - Palm	96%	2
Year 4 - Fir	89%	14
Year 4 - Birch	95%	26
Year 5 - Rowan	96%	22
Year 5 - Sycamore	90%	15
Year 6 - Cedar	97%	14
Year 6 - Oak	97%	16





TWITTER

Moreland Primary School now has a twitter account. Why not have a look and follow us.
[@morelandprimary](https://twitter.com/morelandprimary)

Disclaimer - Any advertisements that are on this newsletter are independent of the school and therefore we do not accept responsibility for any description, services or goods.





PLEASE VISIT OUR WEBSITE!

www.moreland-islington.co.uk For more information on what is happening in our school or to view other newsletters.

We are now on Instagram as well please have a look and follow us!

Please be aware that all bikes and scooters left in the playground are at your own risk we do not take responsibility for any that are lost or stolen. We would advise you to put your child's name on them and buy a small lock for security. We also ask if you could check you have the right scooter as they are all very similar and can get mixed up quite easily. Thank you

You can order school uniform on parent mail and pay by card. If you are having problems registering on Parent Mail, please see Danielle. We do not take cash in the office everything is paid through Parent Mail.



It's an easy, convenient way to receive school messages



To register contact the school office for more details

BOOK BAGS – WHOLE SCHOOL

Please make sure your child brings their book bag to school everyday.

They will need it for homework, letters and to take a book home to read.

If you would like to buy a book bag come to the office we sell them for £6.50

FREE TWO-YEAR-OLD PLACES

If you think you are entitled to a free two-year-old place, please apply now. To check go on the following website www.islington.gov.uk/freec2

You will be given a code that you need to bring to the school or children centre and then complete an application form. We only have a limited amount of free two-year-old places so please check now!

BIRTHDAY CAKES

Please note we are a Healthy School and do not allow parents to bring in birthday cakes for the children.

Change of Contact numbers / Address / Email
If you have changed your contact numbers, home address or email please let us know as soon as possible so we can update our system.



Please feel free to go and visit the chicken and guinea pigs in the playground.

We just ask that children are reminded to be quiet and gentle with them and wash their hands if they touch them. Please do not feed them.



NURSERY PLACES

IF YOU HAVE A CHILD THAT IS THREE YEARS OLD OR WILL BE THREE SOON, PLEASE PICK UP AN APPLICATION FORM FOR A NURSERY PLACE

YOU CAN PICK UP AN APPLICATION FORM FROM DANIELLE OR LISA.





Head of School Notice Board – Important Dates



PLEASE TAKE A
LOOK AT OUR
WEBSITE

Remember to check this board as we may add or cancel certain events.
You can also check our website for up to date information

OCTOBER	
27 th - 31 st	Half Term - school closed
Friday 31 st	Deadline to apply for a September 2026 Reception place
NOVEMBER	
Friday 14 th	Children in Need Day
Friday 21 st	Individual school photos
Thursday 27 th	Parents evening 2-6pm please book a slot nearer the time
DECEMBER	
Tuesday 9 th	Nativity Play 2.30pm
Friday 12 th	Christmas Fair after school
Tuesday 16 th	Christmas Donkey Parade to St Clements Church 10.30am EYFS Year1 and some Year 3 children
Wednesday 17 th	Christmas jumper day and Christmas lunch for the whole school
Friday 19 th December	Last day of term school closes at 1.45pm No playcentre
Monday 22 nd - 5 th January	Christmas holidays 5 th January school shut for Inset Day Children return on the 6 th January 2026

PLEASE CHECK THE LOST PROPERTY BOX IF YOUR CHILD HAS LOST ANY OF THEIR BELONGINGS

THE BOX IS OUTSIDE IN THE PLAYGROUND.

REMEMBER TO WRITE YOUR CHILD'S NAME ON EVERYTHING!

We will dispose of any items that are not collected





Some lovely things that have been happening in our class recently.....

Early Years Willow Lilac Pear Beech	In Nursery and Reception, we have been focussing on settling children for some of our little ones this is their first experience of school. We have introduced the children to the Mood Metre and have been learning about different types of emotions and how we feel about starting school. We have designed our Class Charters, introduced our 3 school rules 'Ready, Respectful and Safe' and have talked about how we behave at school. Children have been becoming familiar with our school routine and have been busy making new friends. We have started our Autumn theme 'Into the Woods' and have been exploring the book 'Owl Babies'. In addition, in Reception, children have started their phonics lessons as well as learning how to recognise and write their names. In addition, our weekly library trips have also commenced. We have had a fantastic start to the year so far!
Year 1 Maple / Olive	This term, Year 1 have been busy exploring lots of exciting topics! In English, we have been using colourful semantics to create sentences about Tiddalik the Frog, helping us build our storytelling skills. In DT, we have started planning and making our very own puppets based on the story, bringing the characters to life. In Geography, we have been learning the names of the seven continents and discovering where they are on the world map. In Art, we have enjoyed designing and creating vibrant African masks, experimenting with patterns and bold colours.
Year 2 Cherry / Pine	Year 2 have been looking at inspirational women in history, focusing on Rosa Parks and the Suffragette movement. We had a workshop with a 'real life' suffragette last week, see the school Instagram and twitter to see pictures! In Maths: we are using White Rose's maths scheme and working on place value. Science; in science our topic this term is Healthy me, part of the Animals including Humans topic. We will be looking at healthy eating, keeping fit and unhealthy snacks. In PSHE- we have been looking at Rules and created our class rules, we have also looked at online safety.
Year 3 Palm / Ash	In year 3, we have been immersed in our Nelson Mandela topic. We have learned about the apartheid and explored fairness and equality. This has also included some persuasive debates and hot seating which we have really enjoyed! In maths, we have been focusing on place value with numbers to 1000. In English, we have been learning about historical events related to Apartheid in South Africa. The children have been exploring its impact and discussing how it shaped people's lives. In Science, we have been learning about the human body. The children enjoyed exploring how our muscles work and how they help us move.
Year 4 Fir/ Birch	In Year 4 we have been working really hard. We have been reading our book Coming to England by Dame Floella Benjamin. From this we have been developing our writing. In Maths, we have been working away at place value - focusing on numbers up to 10,000. We have begun our topic on the Windrush generation, looking at aspects such as the Caribbean Islands and learning about some of the men and women who fought for and supported the allies in the Second World War.
Year 5 Rowan / Sycamore	We have been working really hard in Year 5 this term. We have been reading our book: Freedom, by Katherine Johnson. From this, we have been developing our writing techniques and learning how to write a formal Persuasive Speech. We also visited the London Museum Docklands to support our learning about the Atlantic Slave Trade. In Maths, we have been working on being able to read, write and round numbers all the way to 1 million. In science we are studying 'living things and their habitats' and we are enjoying learning about the different life cycles of mammals, amphibians, insects and birds and the impact that Maria Merion had on this topic.
Year 6 Cedar / Oak	This term we've been busy explorers—taking our learning outdoors in Forest School, tackling place value up to one million in Maths, and discovering the inspiring stories of the Hidden Figures who changed history!

FREE SCHOOL MEALS

Islington Council offers free school meals to all Nursery and primary age pupils in local schools.

For your child to receive free school meals you must register just go to: www.islington.gov.uk/freeschoolmeals

Please Register even if you think you are not entitled to any extra help.

The school receives extra funding for all entitled children.

You may also be entitled to food vouchers in the holidays - £15 per week per child

Please go online and check today, if you need any help to register come to the reception desk.





Applying for Reception Class - Information for Nursery parents

If your child was born between 1st September 2021 - 31st August 2022

Please go to the following website as soon as possible for more details:

www.islington.gov.uk/admissions

Dates and deadlines:

You can apply from 1 September 2025, but you must apply by the deadline, 15 January 2026.

We recommend you apply by 9th January 2026, just in case there are any problems with getting online or logging into the site.

15 January 2026: this is the deadline to submit your application

16 April 2026: you'll get an offer by email after 5pm.

30 April 2026: this is your deadline to accept (or turn down) your school place

If you need help completing the application you can Phone Islington Council on: 020 7527 5515 or call the school office.

PLEASE APPLY NOW DEADLINE 31ST OCTOBER

Applying for secondary schools - Information for Year 6 parents

Please go to the following website as soon as possible for more details:

www.islington.gov.uk/admissions

Dates and deadlines

You can apply from 1st September 2025, and you must apply by the deadline, 31st October 2025.

We recommend you apply by 24th October 2025, just in case there are any problems with getting online or logging into the site.

31st October 2025: this is your deadline to submit a social medical application

2nd March 2026: you will receive an offer by email in the evening

16th March 2026: this is your deadline to accept (or turn down) your school place

Late applications

If you send your application after 31st October 2025 then your application will be marked as late. This means that it will not be considered until they have allocated school places for all applications received on time. This could reduce your chances of getting a place at the school you want.

If you need help completing the application you can Phone Islington Council on: 020 7527 5515 or call the school office.



FREE SWIMMING LESSONS IN ISLINGTON

Throughout the school holidays and in partnership with Islington Council, we are proud to be able to offer a variety of free swimming lessons for children and families. Lessons will run during Easter, May Half Term, Summer and October Half Term. Sessions include:

- Adult and child swimming lessons: 6-week course for under 3's *Summer holiday only
- Swimming lessons for 4 -13-year-olds, intensive lessons, Monday - Friday for 1 or 2 weeks
- Teen swimming lessons 13 -16-year-olds, intensive lessons, Monday - Friday for 1 or 2 weeks
- Family swimming lessons, 6-week course for up to 2 adults and 2 children to learn to swim together and enjoy the pool together *Summer holiday only

To apply please scan QR code or visit website at better.org.uk/free-swimming-lessons

You can email for more information at summer.lessons@gll.org





DON'T MISS OUT

Register for benefits-related free school meals to unlock other support worth hundreds of pounds.

Turn over for details

Unlock extra benefits worth hundreds of pounds per child

If you receive certain benefits, your child could be eligible for so much more than free school meals! Register before the summer break to unlock:



A £15 supermarket voucher per child, per week – worth £90 per child over the summer break!



Access to the free Holiday Activities with Food programme. Book a place for your child at dozens of activities – there's something for everyone. Every activity includes a free healthy meal.



A £150 school uniform voucher for every child moving up from primary to secondary school.

If you receive benefits and are not yet registered for free school meals, visit [islington.gov.uk/FreeSchoolMeals](https://www.islington.gov.uk/FreeSchoolMeals) as soon as possible for the best chance of unlocking all the extra support before the holidays.



OCTOBER HALF TERM HOLIDAY COURSES

Sessions for both boys & girls

Location:

Arsenal Hub, 56 Benwell Rd,
London N7 7BY

Dates:

Monday 27th & Tuesday 28th October 2025
1pm - 5pm each day

Price: £30 (total for both days)

Mixed Groups
Ages 6-9

SIGNUP



Girls Only
Ages 6-11

SIGNUP



Contact for mixed groups:

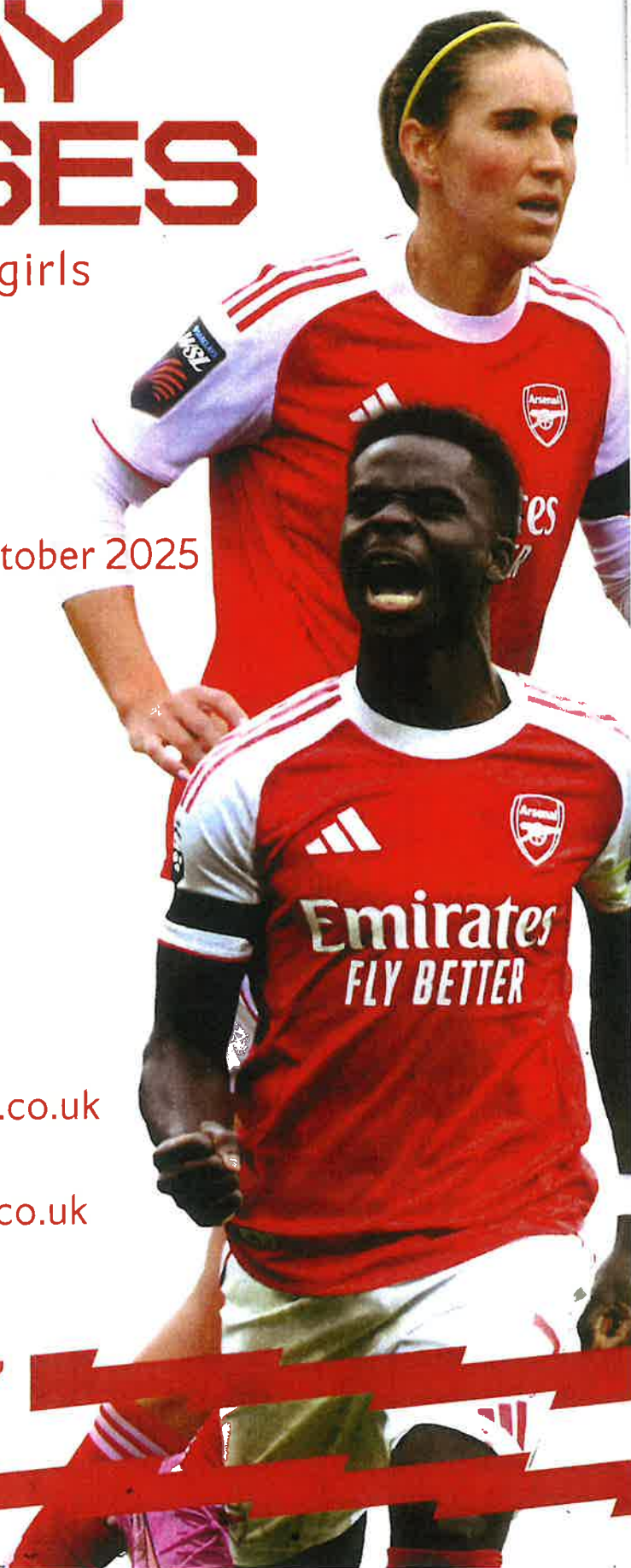
Danny Siggers: dsiggers@arsenal.co.uk

Contact for girls only groups:

Billie Graham: bgraham@arsenal.co.uk



ARSENAL IN
THE COMMUNITY



HALLOWEEN



We are planning our popular Halloween Tunnel trips again on October 26th.

Tickets available here:



FUNDRAISING EVENTS

Our Santa Cruises are back!

A leisurely narrowboat trip along the Regents Canal, on our fully enclosed, cosy boat PeggotyTom. Includes complimentary hot chocolate, marshmallows and mince pies.

FREE goody bag from Santa for children under 16.

Adult only trips with mulled wine available on some dates.

<https://bookwhen.com/islingtonboatclub-events>

27th to 31st Oct 2025

OCTOBER HALF TERM

11am to 4pm

**BOOK
NOW**

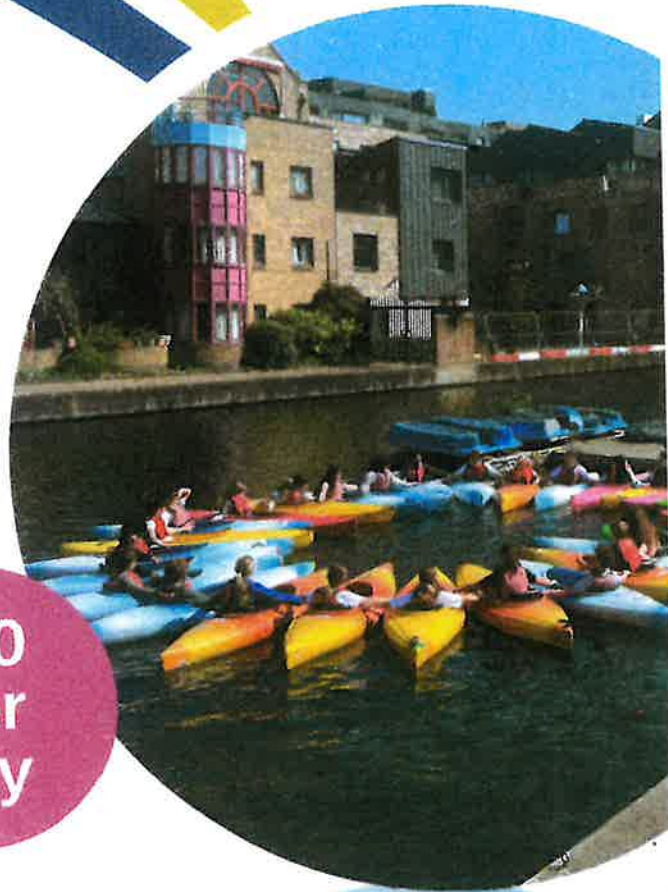


£10
per
day

Ages 8 to 17 years

- Daily sessions £10
- 11am to 4pm
- Kayaking & Canoeing

<https://book.plinth.org.uk/e/UEAE8HNbpbKmRYbvN4fD>



Website
www.islingtonboatclub.com



Email
info@islingtonboatclub.com